

Syrian Maple (EN)

Acero di Siria (IT)

Erable de Syrie (FR)

قيقب سوري (AR-LB)

قيقب سوري (AR-TN)



## *Acer syriacum* Boiss. & Gaill.

### *Growth conditions in the wild*



Native of Syria, Lebanon, Palestine, and Cyprus.



It is found on limestone substrata. It occurs frequently in forests.

It is located in a wide altitudinal range, from ca. 0 to 1300 m. a.s.l.



### *Seed germination*



Pre-treatments: Imbibition in distilled water (2 h). Cold/moist stratification at 4°C on peat with no direct light for 3 months (some seeds may germinate during stratification).



Germination at 20°C, 12 h light/12h dark.

Average germination: 49 % .

### *Seed information and collection*



- Averaged weight for 100 seeds is 3.167g (100 g  $\approx$  3,157 seeds).
- Fruits must be collected when they are fully dried and have a brown colour. Harvesting is done manually from picking the mature fruits directly from the branches.
- Non-protected species, except inside protected areas where collection is regulated.

### *Seed management*

- Cleaning is very easy. Remove the wings of the seeds after drying them.
- Seeds are orthodox, so can be dried at 15°C and 15% RH and stored at 4°C for several years, or -25°C as base collection.

J	F	M	A	M	J	J	A	S	O	N	D	J	F	M	A	M	J	J	A	S	O	N	D
	✿	✿						🍏	🍏			🌰		🌿	🌿	🌿							

Syrian Maple (EN)

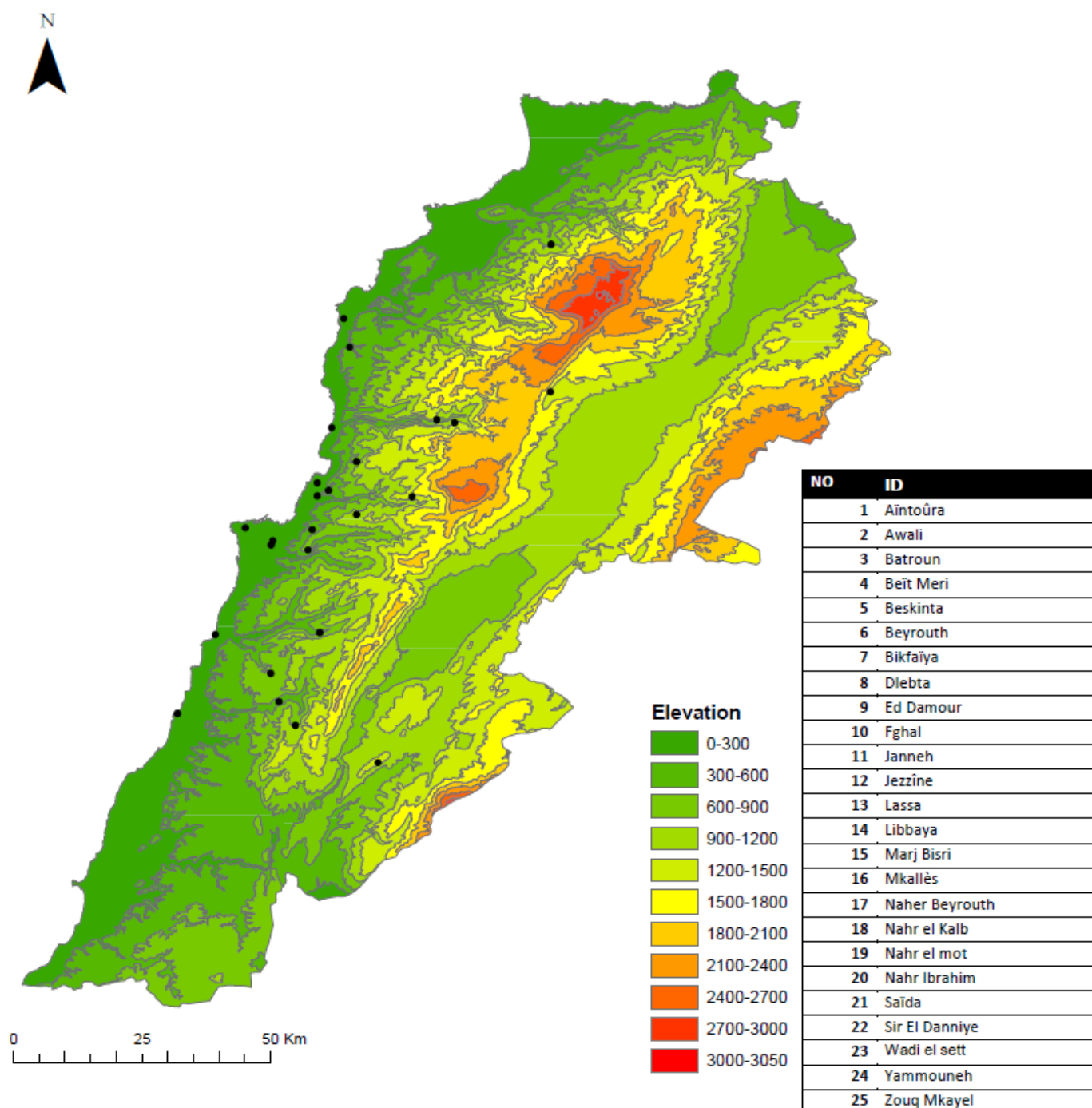
Acero di Siria (IT)

Erable de Syrie (FR)

قيقب سوري (AR-LB)

قيقب سوري (AR-TN)

## Distribution of *Acer syriacum*



Syrian Maple (EN)

Acero di Siria (IT)

Erable de Syrie (FR)

قَيْقَب سوري (AR-LB)

قَيْقَب سوري (AR-TN)

Germination cinetic

